

StreetTrek Web™

FOR

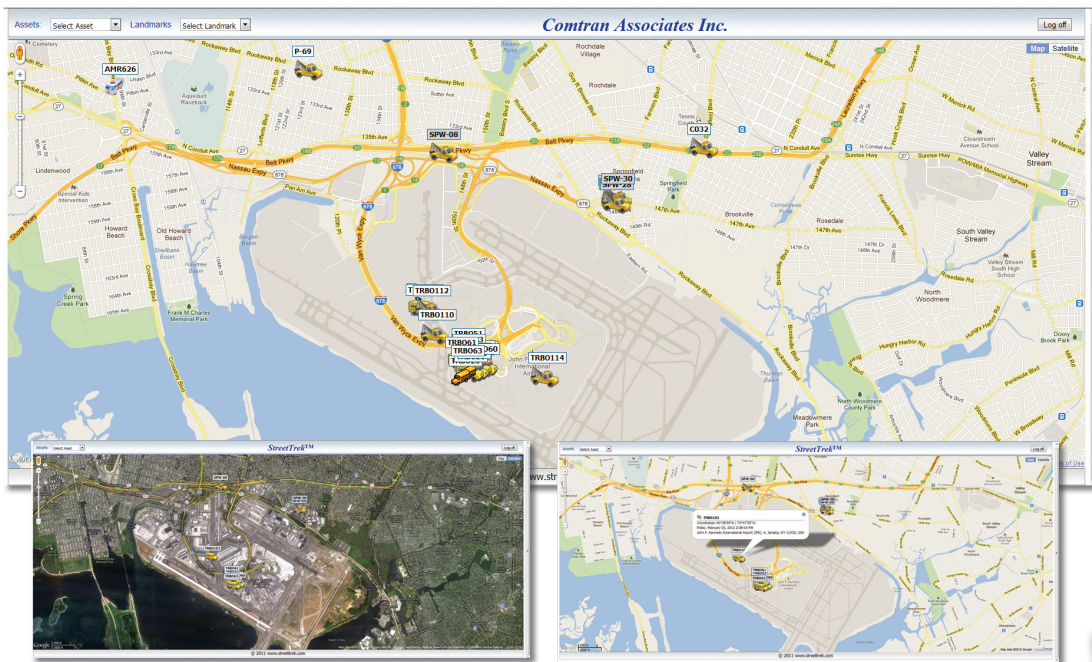
MOTOTRBO™

Professional Digital Two-Way Radio System

Web-based real-time asset management.

StreetTrek **Web**™ provides the asset management capabilities of StreetTrek for MOTOTRBO™ Professional Digital Two-Way Radio Systems, without the need for server or client installations. This powerful web service provides dispatchers and administrators with real-time asset tracking and management capabilities with high-resolution Google Earth images and Google maps to improve operational efficiency.

- High-resolution Google Earth images combined with map, satellite, hybrid, and street level views provide greater detail for precision tracking.
- Fully customizable webpage including company logo and graphics, as well as individual secure user login credentials.
- Access the service from most web-enabled devices, including desktops, notebooks, tablets, and smartphones.
- Street directionality, and landmarks work with satellite map integration to provide advanced tracking.
- Host data on your optional StreetTrek Server or upload to StreetTrek's Server.



Contact us today to find out how StreetTrek **Web** can help you better manage your mobile and portable assets.

866.531.7676 | www.StreetTrek.com



MOTOROLA, MOTO, MOTOROLA SOLUTIONS and the Stylized M Logo are trademarks or registered trademarks of Motorola Trademark Holdings, LLC and are used under license. All other trademarks are the property of their respective owners. ©2012 Motorola Solutions, Inc. All rights reserved.